

Figure 4

Nielson et al.

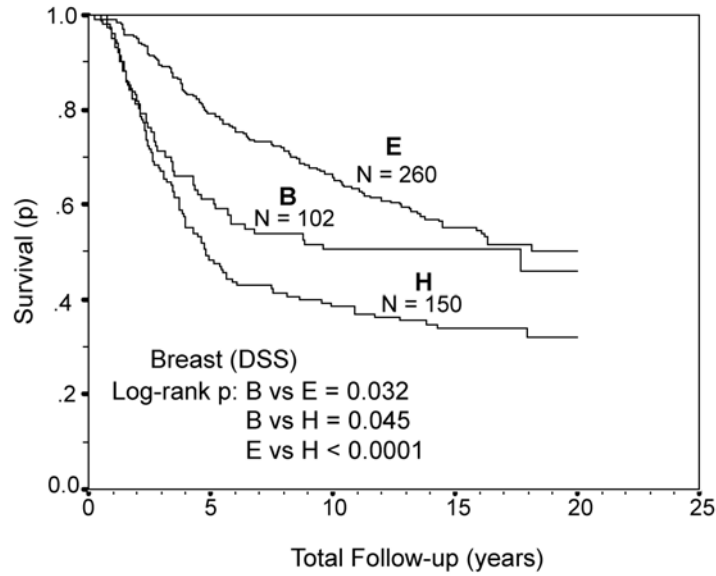


Figure 4. Kaplan Meier disease specific survival (DSS) analysis of breast carcinoma subtypes defined by ER, HER2, CK5/6 and HER1 immunohistochemistry. Group B (the basal-like subtype) is defined as negative for ER, negative for HER2 and positive for HER1 and/or CK5/6. Group E (the luminal subtype) are positive for ER and negative for HER2. Group H (clinically HER2 3+) are positive for HER2.