

Figure 1

Nielsen et al.

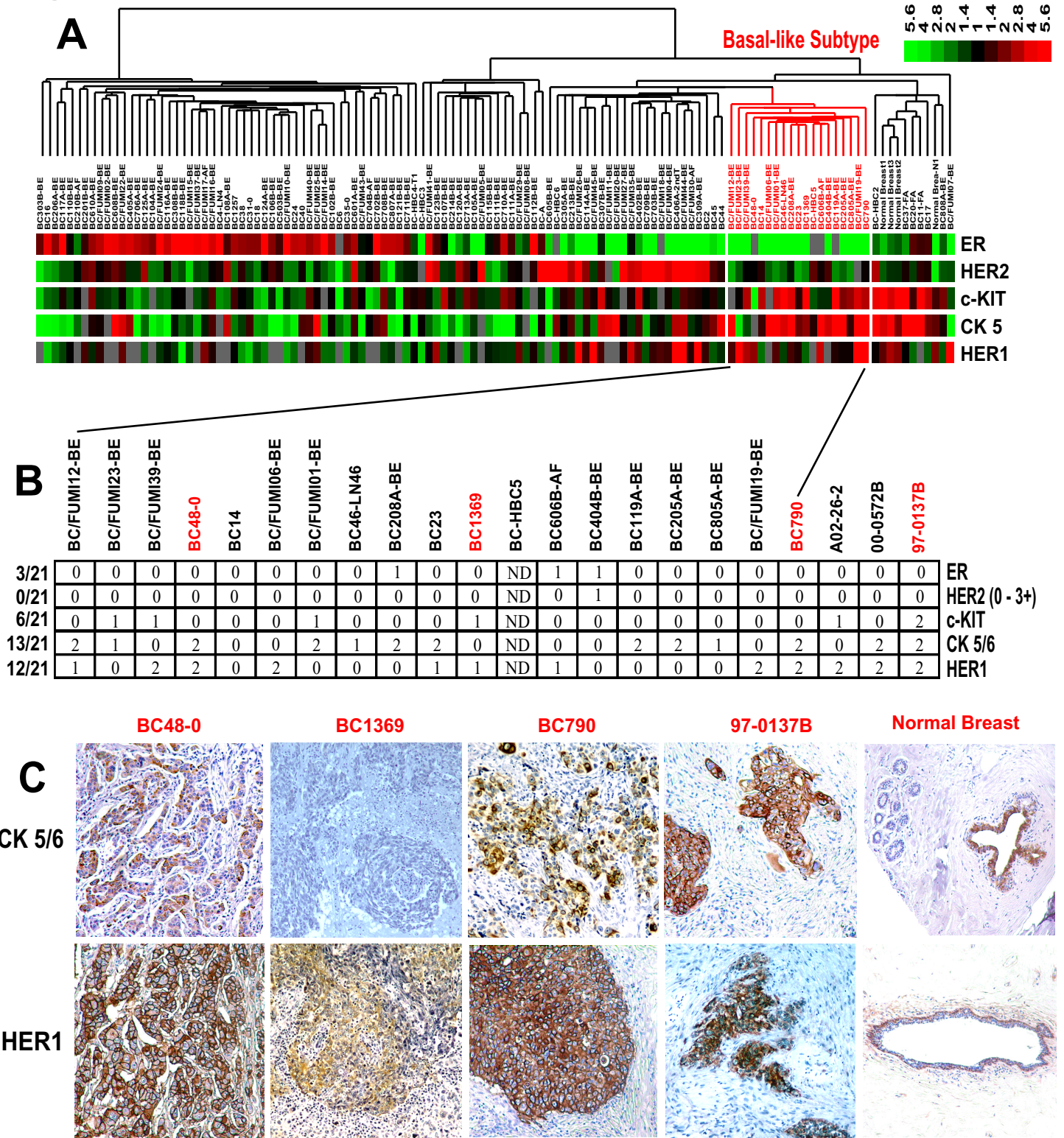


Figure 1. Gene expression patterns in basal-like tumors and their correlation with immunohistochemistry.

A) The 115 patient/tumor sample dendrogram was taken from the hierarchical clustering analysis presented in Sorlie et al. 2003 (2); the tumors were grouped using the breast "intrinsic" gene list based upon 50 paired samples. The BBC are identified in red. The gene expression data for ER, HER2, c-KIT, CK5 and HER1 are shown with red squares representing the highest average expression, black representing average gene expression and green representing the lowest below average. B) 21 BBC identified by gene expression profiling were tested and scored by IHC for CK5/6, HER1, c-KIT, ER and HER2 (0 = negative, 1 = weak and/or focal staining, 2 = strong diffuse staining), except for HER2, which was scored using a standard (0-3+) scale. ND = not determined. C) Representative immunostaining results for 4 basal-like tumors and a normal breast sample for CK5/6 and HER1.